

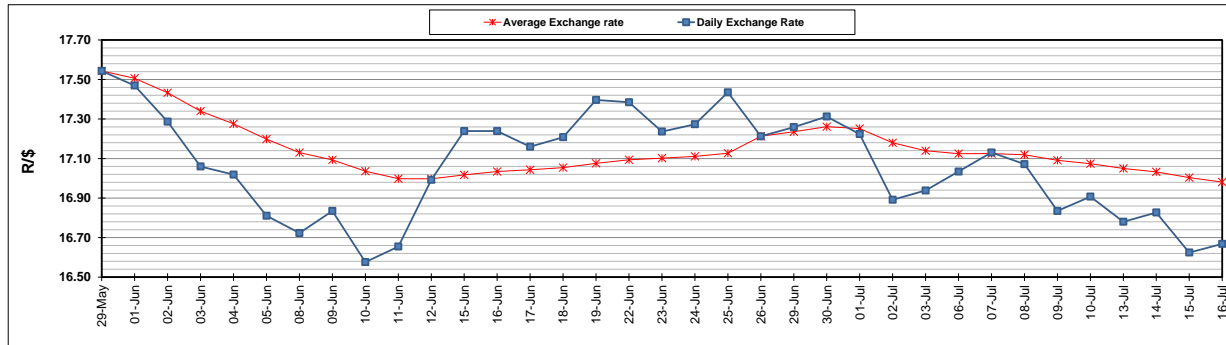
	PETROL 95 ULP	PETROL 93 ULP & LRP	DIESEL 0.05%	DIESEL 0.005%	ILL. PAR.
GAUTENG PUMP PRICE (SA c/l) AS FROM 01/07/2020	1,512.000	1,483.000	-	-	-
WHOLESALE PRICE (SA c/l) AS FROM 01/07/2020	-	-	1,303.560	1,307.960	703.828
SINGLE NATIONAL MAXIMUM RETAIL PRICE	-	-	-	-	882.000
BASIC FUEL PRICE - 16/07/2020 (SA c/l)	546.725	537.130	572.620	577.409	515.407
PRESS RELEASE CONTRIBUTION TO BFP 01/07/2020 - 16/07/2020 (SA c/l)	564.770	545.770	552.630	557.030	499.128
UNIT OVER/(UNDER) RECOVERY - 16/07/2020 (SA c/l)	18.045	8.640	(19.990)	(20.379)	(16.279)
AVERAGE BASIC FUEL PRICE 26/06/2020 - 16/07/2020	557.186	542.275	580.052	584.451	512.927
AVERAGE UNIT OVER/(UNDER) RECOVERY 26/06/2020 - 16/07/2020	(26.816)	(29.105)	(62.022)	(61.221)	(56.599)

### ANALYSIS MOVEMENT OF AVERAGE OVER/(UNDER) RECOVERY

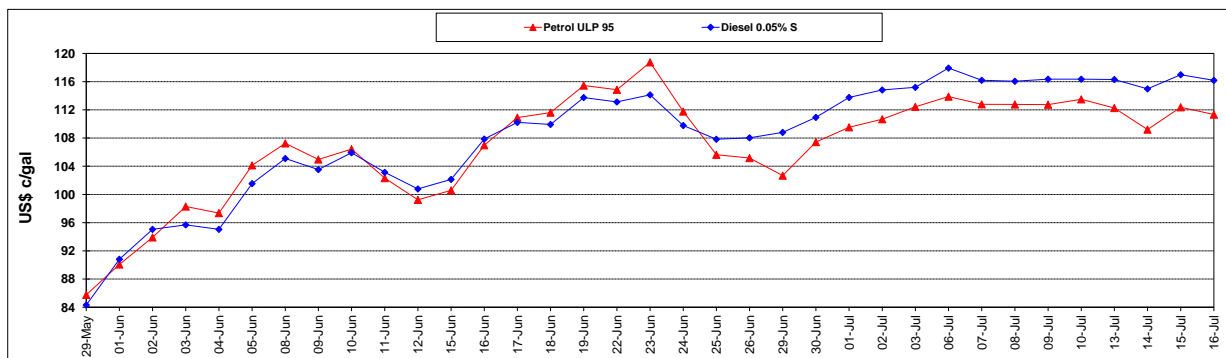
	PETROL 95	PETROL 93	DIESEL 0.05%	DIESEL 0.005%	ILL. PAR.
- MOVEMENT IN INTERNATIONAL PRODUCT PRICES	(31.610)	(33.771)	(67.013)	(66.249)	(61.012)
- MOVEMENT IN EXCHANGE RATE	4.794	4.666	4.991	5.028	4.413
AVERAGE UNIT OVER/(UNDER) RECOVERY 26/06/2020 - 16/07/2020	(26.816)	(29.105)	(62.022)	(61.221)	(56.599)

### R/\$ EXCHANGE RATE - (R/\$16.6680 - 16/07/2020)

#### EXCHANGE RATE USED IN BASIC FUEL PRICE



#### INTERNATIONAL PRODUCT PRICES OF BASKET USED IN BASIC FUEL PRICE



#### BASIC FUEL PRICE IN SA CENTS PER LITRE

